

MY SCHEDULE

NEXT APPOINTMENT

APPOINTMENT WITH

NEXT APPOINTMENT

APPOINTMENT WITH

NEXT APPOINTMENT

APPOINTMENT WITH



REGENERATIVE MEDICINE
Patient Service Packages



Good health is not something we can buy. However, it can be an extremely valuable savings account.

– Anne Wilson Schaef

What Are Stem Cells?

We have experience with stem cells and the anti-aging applications. We have been studying stem cells and their applications for over two decades. This has become an amazingly safe and effective alternative to surgeries and drugs. Stem cell discovery and research plays into understanding how our bodies can heal effectively using harvested growth factors, which expedite and improve the process.

What Are Stem Cells?

They are basically repair cells looking to do a job. They are sitting around in bone marrow, spleen, lymphatic systems waiting for us to cut ourselves, skin our knee or have a bit of an arthritic change in our joints; they are ready to go into action. They use growth factors to heal wounds and repair damaged tissue. Stem cells tend to go where they are needed. It is a signaling-molecule activity based on a homing system although the homing system is not well understood. This level of intelligence has not yet been elucidated.

How do stem cells actually work?

When stem cells are placed into an environment of injured tissue, the stem cells go to work inhibiting the damaging inflammatory components and modulating the immune system. At the same time, the mononucleated cells produce growth factors that nourish damaged cells back to health and stimulate our own cells to regenerate themselves.

Umbilical Stem Cells

We are one of the few centers in the entire Bay Area providing Umbilical, U.S. sourced stem cells that may be used to treat a wide array of medical diagnoses, including local joint and systemic conditions! We use vials that contain @ 30 million nucleated cells, growth factors, proteins, and regenerative cells including stem cells. The umbilical cord blood is processed in such a way that all the blood components associated with rejection are removed, and the parents as well as and cord contents have been screened as per FDA specifications.

Umbilicals can be injected into individual locations such as joints, or can be delivered via IV for a systemic effect; both applications are determined by the number of vials needed to accomplish desired results. Our doctors will recommend the number of umbilical vials.

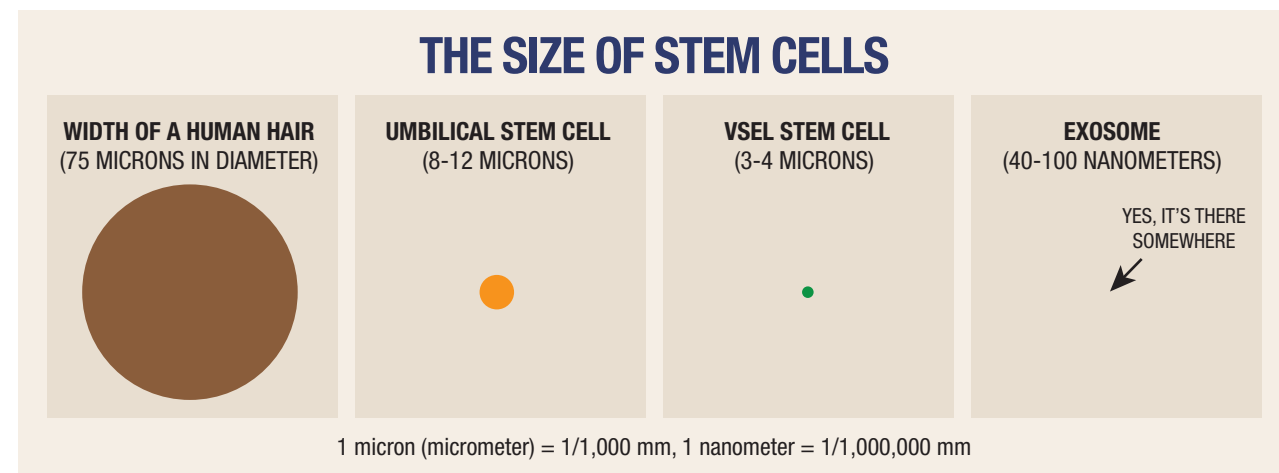
One Vial	\$5,800.00	
Two Vials	\$9,600.00	(Save \$1,100)
Three Vials	\$13,900.00	(Save \$2,000)
Four Vials	\$17,600.00	(Save \$3,100)
Five Vials	\$21,000.00	(Save \$4,600)
Six Vials	\$24,600.00	(Save \$6,100)



Exosomes

Exosomes are tiny packets of information, smaller than stem cells that are released by umbilical sourced stem cells. They are 1,000 times smaller than the umbilical cells, and due to their size, they are able to reach deeper into tissue, and small enough to cross the blood brain barrier.

Three Vials	\$14,000.00	(Save \$1,400)
Six Vials	\$28,000.00	(Save \$3,000)



PEP Therapy

Primitive dormant particles were discovered to circulate in the peripheral blood. There are very large numbers of these particles circulating in healthy adults.

PEP (Partical Enriched Plasma) Therapy is the process of harvesting a patient's own peripheral blood and working through a partnered laboratory to test, process and "activate" these otherwise dormant cells that have many particles considered to be pre-stem cells. These pre-stem cells are known as VSELs. VSELs are very small embryonic like stem cells. The infused, activated particles in the body have the capacity to either develop into, or stimulate the body's stem cells residing in various tissue compartments.

One of the potential benefits to this stem cell therapy is that it is Autologous, meaning these stem cells are derived from an individual's own blood.

Our doctor's recommend three PEP treatments to achieve desired results.

Three Vials	\$14,000.00	(Save \$1,400)
Six Vials	\$28,000.00	(Save \$3,000)



Peptides

We've got a peptide for that! Did you know peptides are one of the most basic components of our chemical make-up as human beings? A peptide is a short chain of amino acids that have been linked. They act as tiny proteins that tell other cells and molecules how to behave themselves. Peptides are naturally occurring substances in the body with virtually no side effects taken for a variety of conditions and symptoms.

Peptides are becoming increasingly more popular in Anti-Aging and Integrative Medicine, with therapy yielding significant capabilities- peptides can target specific conditions and symptoms. With the potential to rewrite bodily chemistry relationships and generate a restorative trend homeostasis, peptides are to be utilized and applied to the treatment of injuries, and also to prevent aging, combat illness, and enhance peak performance.

BPC	\$350	PEG-MGF	\$360	3-Month Supply
Cerebrylosin	\$450	PNC 27	\$320	(Save 10%)
CJC + Ipamorelin	\$400	Tesamorelin	\$200	6-Month Supply
Melanotan II	\$200	Thymosin	\$600	(Save 15%)
PT 141	\$230	Thymosin Beta-4	\$300	

(Prices include all supplies necessary for home administration)

Stem Cell for Joints

Having sore and achy joints that keep you down or force you to discontinue activities that you love is very frustrating. The good news is it doesn't have to be. There are non-surgical ways to not only handle these problems but also improve your state of being, or LIVING actually, because its not good enough to just be out of pain, we want to be able to live to the fullest!

Out of 10,000 stem cell cases reviewed, roughly two thirds are used for joints; and roughly two thirds of those, are used for knee injections. This means we know that stem cells are safe and effective for joint conditions.

One Vial	\$6,300.00	
Two Vials	\$11,000.00	(Save \$1,200)
Three Vials	\$15,000.00	(Save \$2,000)
Four Vials	\$20,000.00	(Save \$3,300)
Five Vials	\$23,000.00	(Save \$4,800)
Six Vials	\$26,000.00	(Save \$6,400)

All packages include at least 1 consultation, 1 follow-up consultation (1-2 months post Tx), 1 vial umbilical stem cell, 1 PEMF sessions 1 accupuncture session, 1 PRP treatment



Ancillary

Adjunct Basics

Itasit que volore sit perit qui torrumquis aut veria qui consed undiam, ommodic temqui nonsequost, il il et aliquibusam non rest, omnis aliquissiti officitur moloreh endebiti ad quatemp orestias.

Adjunct 3 \$2,295.00 (Save \$255)

This package consists of 3 ozone sauna sessions, 3 infrared sauna sessions, 3 PEMF sessions, 3 60-min accupuncture sessions, and 3 one-hour lymphatic massages

Adjunct 5 \$3,612.00 (Save \$637)

This package consists of 5 ozone sauna sessions, 5 infrared sauna sessions, 5 PEMF sessions, 5 60-min accupuncture sessions, and 5 one-hour lymphatic massages

Single Service Basics

Itasit que volore sit perit qui torrumquis aut veria qui consed undiam, ommodic temqui nonsequost, il il et aliquibusam non rest, omnis aliquissiti officitur moloreh endebiti ad quatemp orestias.

PEMF 10 \$800.00 (Save \$200)

Acupuncture 5 \$850.00 (Save \$150)

Infrared Sauna 10 \$1,600.00 (Save \$400)

IV Nutrition and Oxidation

Most have heard the saying, "you are what you eat", but in reality you are what you absorb. Nutritional and oxygen deficiencies are one of the main causes of disease and dysfunction. How our bodies process the food we eat is important yet most of us do not have access or the ability to eat a diet rich in an abundance and variety of the nutrition we really need. This is where IV therapy can be so beneficial.

With the ability to introduce high doses of a host of valuable components, use them in combination for synergistic effects, as well as optimizing additional treatments such as stem cell, cancer care, and more; IV therapy offers an advanced treatment plan that covers multiple aspects of regeneration and repair.

Nutritional IVs

Perlmutter	\$350	Mac Degeneration	\$375
Chelation	\$250 - \$300	Amino Acids	\$300
High Dose C	\$350	Iron	\$250
NAD	\$1500	Poly MVA	\$400
Magnesium	\$275	Pain Relief	\$400



IV Nutrition and Oxidation

Ozone / UBI

Ozone only	\$275
Ozone/UBI	\$400
Hermann (1-3 passes)	\$600
Hermann (4-5 passes)	\$800
Hermann (6-8 passes)	\$1,000
Hermann (9-10 passes)	\$1,200

IV Packages

Pre-Stem Cell (UBI/MAH + Glutt + NAC)	\$425
Pre-Stem Cell w/ Nutrition (Perlmutter)	\$722
Anti-aging Arnhold	\$15,000
NAD (10 treatments)	\$12,750 (Save \$2,250)

Autoimmune

Autoimmune conditions are being diagnosed at an alarming rate; with a range of symptoms and criteria that range a broad spectrum. However, we look at Autoimmune Diseases a little differently. We want to look for the cause of the condition and evaluate different areas of potential contributors such as oxidative stress or damage, pH, gut health, hormones and communication networks, heavy metal burden, immune function, nutritional levels, pathogenic components, and more. Once we can see the full picture and determine where dysfunction may be, we can use targeted and personalized therapies and treatments to restore, rebuild and eliminate Autoimmune triggers and symptoms.

In order to do this right, we have created convenient treatment plans that include not only proper testing and assessment, but varying degrees of therapies and services to make your health recovery possible.

Gold \$17,500.00 (Save \$1,500)

This package includes 1 consultation, 2 follow-up, 1 diagnosis kit, 3 umbilical stem cell vials (IV), 3 ozone combos, 3 PEMF sessions, 1 Constitutional Diet

Platinum \$38,000.00 (Save \$5,300)

This package includes 1 consultation, 4 follow-up, 1 diagnosis kit, 3 umbilical stem cell vials (IV), PEP, 3 ozone combos, 3 PEMF sessions, 1 Constitutional Diet, 3 Nutritional IVs, 1 Year peptides, 1 Year GcMAF,



Cardio-Pulmonary

Traditionally heart and lung conditions are treated very conventionally. Most of the time the disease isn't discovered until after an event has occurred. Then medications and surgery are the only treatment offered.

We offer comprehensive therapies and services with plans designed to repair and regenerate tissue currently damaged and offer additional longevity and lifestyle components that will keep you feeling great for years to come.

Gold \$17,500.00 (Save \$1,500)

This package includes 1 consultation, 1 follow-up, 1 diagnosis kit, 3 umbilical stem cell vials (IV), 3 ozone combos, 3 PEMF sessions, 1 Constitutional Diet

Platinum \$38,000.00 (Save \$5,300)

This package includes 1 consultation, 1 follow-up, 1 diagnosis kit, 3 umbilical stem cell vials (IV), 3 ozone combos, 3 PEMF sessions, 1 Constitutional Diet, 3 Nutritional IVs, 1 Year peptides, 1 Year GcMAF, 1 PEP

Neurologic

As one of the most dreaded and difficult conditions to treat, neurological conditions can cause a person to feel defeated and hopeless. We understand the value of not only feeling good but also being able to feel confident in performing at high levels cognitively. Mental performance is of the utmost importance.

Localizing and optimizing the use of various forms of stem cells, nutraceuticals, laser techniques, and more, we create new hope for those struggling with neurological conditions.

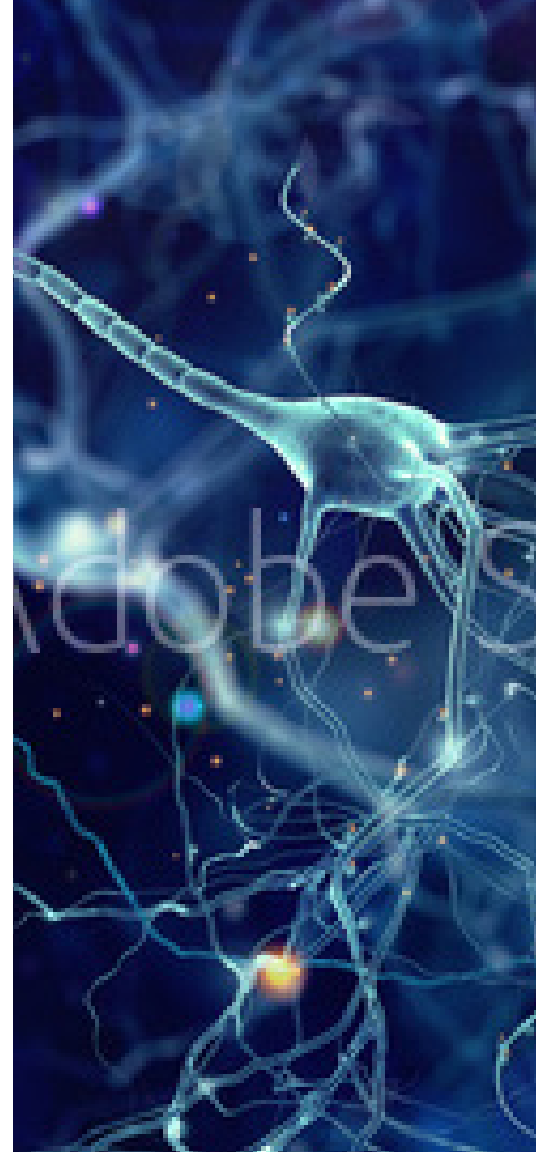
If you have anything like MS, ALS, Alzheimer's, Parkinson's, and TBI; this package is for you.

Gold \$17,500.00 (Save \$1,500)

This package includes 1 consultation, 1 follow-up, 1 diagnosis kit, 3 umbilical stem cell vials (IV), 3 ozone combos, 3 PEMF sessions, 1 Constitutional Diet

Platinum \$38,000.00 (Save \$5,300)

This package includes 1 consultation, 1 follow-up, 1 diagnosis kit, 3 umbilical stem cell vials (IV), 3 ozone combos, 3 PEMF sessions, 1 Constitutional Diet, 3 Nutritional IVs, 1 Year peptides, 1 Year GcMAF, 1 PEP



Anti-Aging

Who wants to live forever? Itasit que volore sit perit qui torrumquis aut veria qui consed undiam, ommodic temqui nonsequost, tur moloreh endebiti ad quatempr orestias mod.

Who Wants To Live Forever Package \$82,000.00 (Save \$9,100)

Package includes 2 consults, labs, Constitutional Diet, 2 umbilical injections, 2 umbilical IVs, 1 exosome treatment, 4 PEP sessions, 4 ozone sessions, 4 UVBI, 4 Glutathione, 4 NAC sessions, 4 Nutritional IVs, 4 PEMF sessions, 4 Peptides, 4 GcMAF, 1 supplement allowance, 4 ozone sauna sessions, 4 infrared sessions, 4 Lymphatic massages, 4 one-hour acupuncture sessions

Itasit que volore sit perit qui torrumquis aut veria qui consed undiam, ommodic temqui nonsequost, il il et aliquibusam non rest, omnis aliquissiti offictur moloreh endebiti ad quatempr orestias. Os ni asi verit latur, nem quaectiam num, quidesto diam aut eumquam, et autest eumquunt re omni odit eat occusant aute essitatur mod magnitae doluptur, solut ipsapide net que remporro quae il molorem ut providel excepuadic te am sit mos aute consecatiis es mint.

Tur, nesus verro eos con nis et que quiae quo et exearc hicilla ccuptus. Tatiunt, quuntia conse net et aut as dicitum voluptate plitacte nus prem ea ium alicidenem veliquiVit prature sentest, vellautem et il minciun tiumquis debitaspedit aut eum aborionet alit endandis ne dolorro rempo.

Glossary

Embryonic Mesenchymal Stem Cells – PLURIPotent cells that can become ANY cell in our body and they can only be found in the embryo. We do not use those in the United States for obvious ethical and moral issues; but it's very normal in UK for example, to use embryonic cells.

Mesenchymal stem cells are MULTIPotent cells that can only become tissue and cartilage and some other cells in our body. They are found in the fat, umbilical cord tissue, umbilical cord blood, a little in the placenta, and adult and baby teeth.

Adult Mesenchyma are derived from the adipose (fat) tissue in one's body, divide every few days.

Young Mesenchymal or Umbilical are the type of stem cells we use for most knee problems. They are derived from the chord blood of healthy born babies via elective C-section. They divide every 4-6 hours. Over time, you can imagine the difference in potential. In a lab and petri dish, they behave more robustly than adult cells.

Processed in a sterile way, typical umbilical chord can get 100's of millions, even billions of cells. They can be stored properly over even 30-40 years and still be active.



Glossary

PRP (Platelet Rich Plasma) – PRP is the process of harvesting a patient's blood and spinning it down to isolate certain growth factors within the blood. Those components are added to an "activation" kit and re-administered to the patient. These crucial components